



Illustration 6.19. *St. Francis Xavier, Gesu, 1583*, as published in *The Face of the Saints*, Wilhelm Schamoni, translated by Anne Fremantle (New York: Pantheon Books, 1947), 131. The book and sketches are currently housed in the Jean Charlot Collection, University of Hawai'i-Manoa, Honolulu, Hawai'i.



Illustration 6.20. Photo of Monsignor Franz Wasner posing for Jean Charlot. Original photo Martin Charlot. Charlot Family Album, January 1962-January 1963, "Weddings, Fiji," Jean Charlot Collection, University of Hawai'i-Manoa, Honolulu, Hawai'i.



Illustration 6.21. Teresia Tinai in front of *Black Christ and Worshipers*, Jean Charlot, fresco, 1962, St. Francis Xavier's Catholic Church, Naiserelagi, Fiji. Photo Caroline Klarr, October 1999.



Illustration 6.22. Fijian girl at far left, detail of Fijian (left) panel, *Black Christ and Worshipers*, Jean Charlot, fresco, 1962, St. Francis Xavier's Catholic Church, Naiserelagi, Fiji. Photo Jesse Ulrick, September 2002. Collection of Caroline Klarr.



Illustration 6.23. Portrait of Fijian woman with mat, detail of Fijian (left) panel, *Black Christ and Worshipers*, Jean Charlot, fresco, 1962, St. Francis Xavier's Catholic Church, Naiserelagi, Fiji. Photo Jesse Ulrick, September 2002. Collection of Caroline Klarr.



Illustration 6.24. Maria Gemma with mats, residence, Naiserelagi, Fiji. Photo Caroline Klarr, October 1999.



Illustration 6.25. *Tali Ibe: Weaving Mats, Kei Viti: Melanesian Images. Five Lithographs in Color.* By Jean Charlot, printed by Lynton Kistler, 1978. Photo Jana Jandrokovic. Collection Martin Charlot.



Illustration 6.26. Portrait of Fijian man with *tabua* or whale's tooth offering, Fijian (left) panel, *Black Christ and Worshipers*, Jean Charlot, fresco, 1962, St. Francis Xavier's Catholic Church, Naiserelagi, Fiji. Photo Jesse Ulrick, September 2002. Collection of Caroline Klarr.





Illustration 6.27. Selestino Naucukidi Koloaia, Rokovuaka village, Ra District, Fiji, Photo Caroline Klarr, October 1999.



Illustration 6.28. Indo-Fijian woman with garland, detail of Indo-Fijian (right) panel, *Black Christ and Worshipers*, Jean Charlot, fresco, 1962, St. Francis Xavier's Catholic Church, Naiserelagi, Fiji. Photo Jesse Ulrick, September 2002. Collection of Caroline Klarr.



Illustration 6.29. Postcard of Kamehameha statue adorned with *lei*, Honolulu, Hawai'i. Garlands were also appropriate offerings for indigenous deities in the Pacific Islands, Asia, and Mexico.



Illustration 6.30. Portrait of Indo-Fijian farmer, detail of Indo-Fijian (right) panel, *Black Christ and Worshipers*, Jean Charlot, fresco, 1962, St. Francis Xavier's Catholic Church, Naiserelagi, Fiji. Photo Jesse Ulrick, September 2002. Collection of Caroline Klarr.



Illustration 6.31. Indo-Fijian altar boy on far right, detail of Indo-Fijian (right) panel, *Black Christ and Worshipers*, Jean Charlot, fresco, 1962, St. Francis Xavier's Catholic Church, Naiserelagi, Fiji. Photo Jesse Ulrick, September 2002. Collection of Caroline Klarr.



Illustration 6.32. Narendra, Naiserelagi, Fiji. Photo Caroline Klarr, October 1999.



Illustration 6.33. *Tabua* or whale tooth offering, detail of Fijian (left) panel, *Black Christ and Worshipers*, Jean Charlot, fresco, 1962, St. Francis Xavier's Catholic Church, Naiserelagi, Fiji. Photo Jesse Ulrick, September 2002. Collection of Caroline Klarr.



Illustration 6.34. Fijian man (Mr. Lagilevu) with *sevusevu*, Naiserelagi, Fiji. Photo Caroline Klarr, July 2001.





Illustration 6.35. *Tanoa* and *bilo* with background of *yaqona* leaves, detail of central panel, *Black Christ and Worshipers*, Jean Charlot, fresco, 1962, St. Francis Xavier's Catholic Church, Naiserelagi, Fiji. Photo Jesse Ulrick, September 2002. Collection of Caroline Klarr.



Illustration 6.36. Brass bowl and plumes of smoke, detail of central panel, *Black Christ and Worshipers*, Jean Charlot, fresco, 1962, St. Francis Xavier's Catholic Church, Naiserelagi, Fiji. Photo Jesse Ulrick, September 2002. Collection of Caroline Klarr.

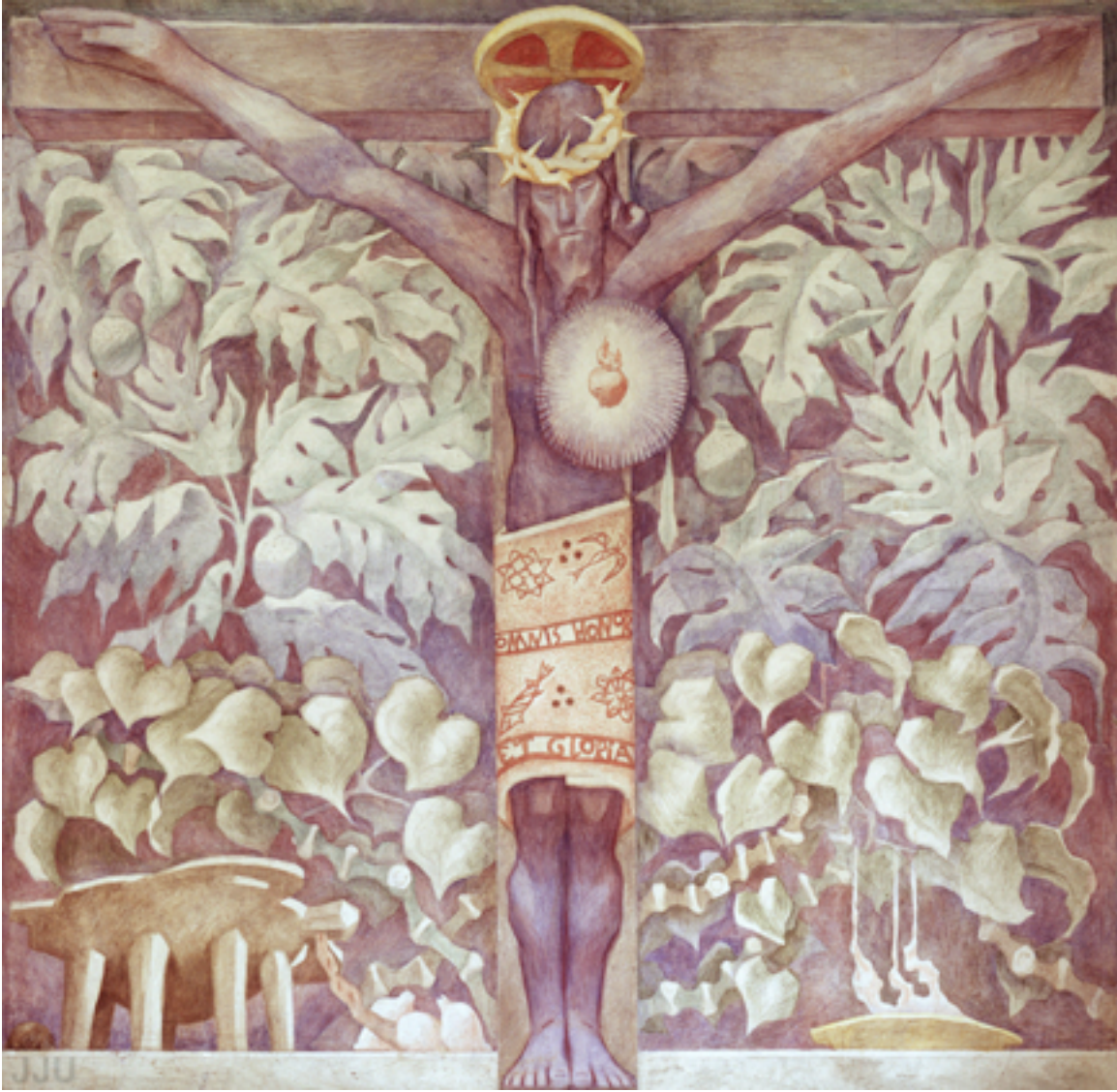


Illustration 6.37. Black Christ, central panel, *Black Christ and Worshipers*, Jean Charlot, fresco, 1962, St. Francis Xavier's Catholic Church, Naiserelagi, Fiji. Photo Jesse Ulrick, September 2002, collection of Caroline Klarr.

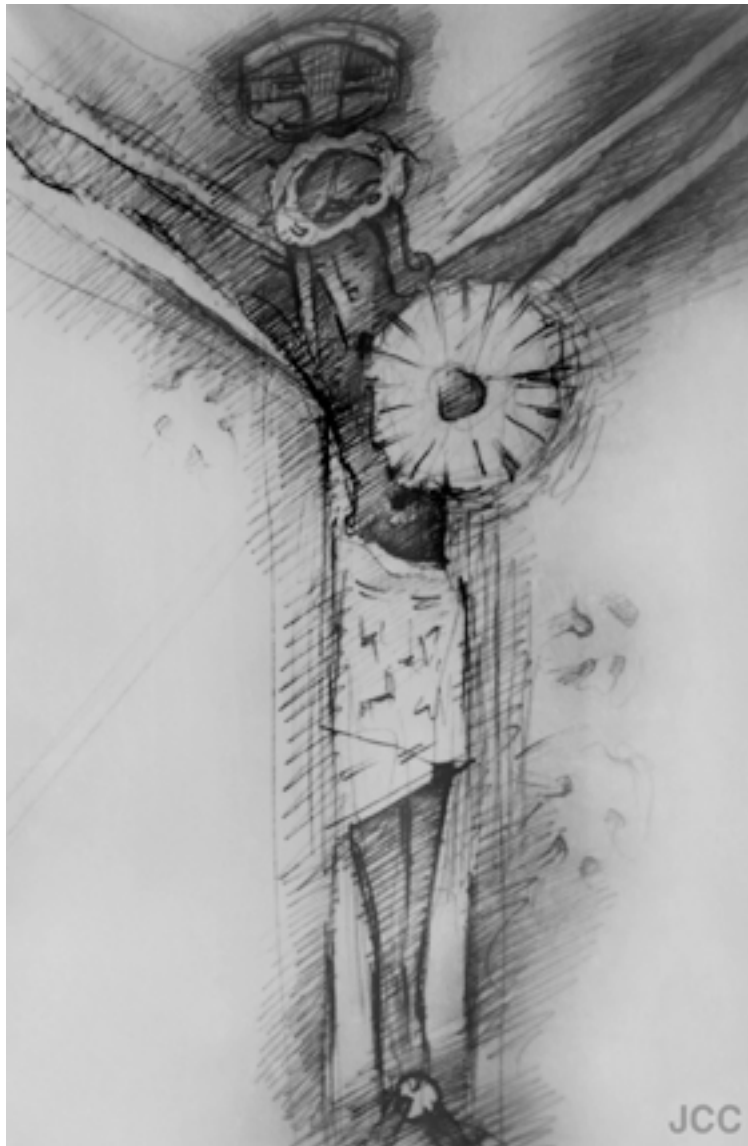


Illustration 6.38. Charcoal study of the Black Christ, Charlot Family Album, January 1962-January 1963, "Weddings, Fiji," Jean Charlot Collection, University of Hawai'i-Manoa, Honolulu, Hawai'i.



Illustration 6.39. Black Christ, black and brown crayon, 116 x 35 inches, scroll mount. (JCC.DM1962.1). Courtesy of Jean Charlot Collection, University of Hawai'i-Manoa, Honolulu, Hawai'i. Photo Caroline Klarr.



Illustration 6.40. Black Christ figure, detail of central panel, *Black Christ and Worshipers*, Jean Charlot, fresco, 1962, St. Francis Xavier's Catholic Church, Naiserelagi, Fiji. Photo Jesse Ulrick, September 2002. Collection of Caroline Klarr.



Illustration 6.41. Christ's face, detail of central panel, *Black Christ and Worshipers*, Jean Charlot, fresco, 1962, St. Francis Xavier's Catholic Church, Naiserelagi, Fiji. Photo Jesse Ulrick, September 2002. Collection of Caroline Klarr.